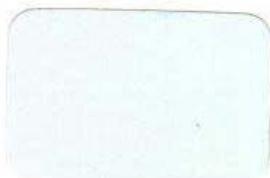


OXYPLAST STOCK COLOURS



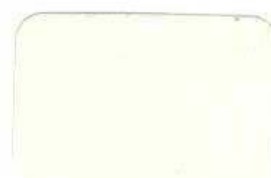
FF160/12/C1



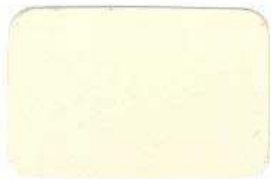
PR12/81/CS7



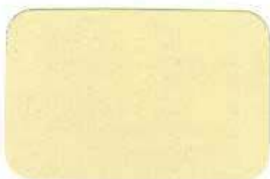
PR12/4250/CS4



PR12/4249/CS1



PR12/9210/CS17



PR12/70437/C3



PR12/70367/CS6



PR12/808/CS10



PR12/827/CS15



PR12/2138/C1



PR12/810/CS6



FF160/80141/C8



PR12/227/CS13



PR12/263/CS2



PR12/2234/CS10



PR12/212/C11



PR12/317/CS1



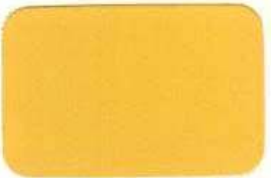
PR12/318/CS10



PR12/359/CS1



FF160/3106/CS6



FF160/164/C



FF160/698/C1



FF160/6178/C4



FF160/509/C41



PR12/973/CS3



PR12/9228/CS8



PR12/995/CS16



PR12/9385/CS5



PR12/9354/CS12



PR12/996/CS7



PR12/732/CS4



E6/708/2CM

ARCHITECTURAL COATINGS

8 RAL colours in Superdurable polyester grade: Conform to AAMA 2604-98 Architectural Specifications; Approved for use in extended outdoor durability applications; Tested by PSB Corporation (Singapore)



RAL 7044
APR/60126/CS8



RAL 1014
APR/70167/CS2



RAL 8004
APR/90023/CS12



RAL 3009
APR/5341/CS5



RAL 6034
APR/2857/C14



RAL 5018
APR/315/C44



RAL 6024
APR/20015/C10



RAL 5019
APR/3190/C20

RAL COLOURS



RAL 9003
PR12/4269/CS6



RAL 1013
PR12/9917/CS8



RAL 1015
PR12/941/CS48

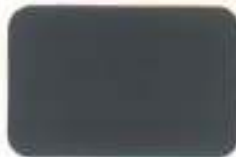
RAL 9002
PR12/8332/CS4



RAL 7038
PR12/877/CS4



RAL 7004
PR12/8158/CS8



RAL 7012
PR12/8901/CS1



RAL 7016
PR12/890/CS6



RAL 5012
PR12/3080/CS3



RAL 5005
PR12/3251/CS19



RAL 5002
PR12/355/CS10



RAL 4005
PR12/419/C10



RAL 6033
PR12/2753/CS2



RAL 6001
PR12/2045/CS2



RAL 6003
PR12/2666/CS4



RAL 8028
PR12/90131/CS1



RAL 2000
PR12/650/CS5



RAL 1018
PR12/159/CS11



RAL 3020
PR12/526/CS31



RAL 3005
PR12/5093/CS7